



## **NOTICE OF RACE**

# **WORLD CHAMPIONSHIP 2008 AND OPEN WEEK**

**For**

**International Europe Class**

**June 30th - July 12th, 2008**

# Associação Naval do Guadiana Vila Real de Santo António Algarve – Portugal

## NOTICE OF RACE

The International Europe Class World Championship will include the International Open Week followed by the World Championship.

The regatta will be sailed at Vila Real de Santo António, Algarve, Portugal.

The event is organized under the authority of the Associação Naval do Guadiana (ANG), the national Europe Class organization of Portugal in conjunction with the International Europe Class Union (IECU) and the Federação Portuguesa de Vela.

### 1 RULES

- 1.1 The regatta will be governed by the ‘rules’ as defined in The Racing Rules of Sailing (RRS).
- 1.2 No national authority prescriptions will apply.
- 1.3 Decisions of the international jury will be final as provided in RRS 70.4.
- 1.4 If there is a conflict between languages the English text will take precedence.
- 1.5 Competitors may have available for use not more than 1 hull, 1 mast, 1 boom, 1 rudder blade, 1 rudder head, 1 centre board and 2 sails.

### 2 ADVERTISING

All competitors will be required to display advertising of the event sponsor on their boats in accordance with ISAF Regulation 20.3(d)(i).

### 3 ELIGIBILITY AND ENTRY

- 3.1 ISAF eligibility as per Regulation 19 is required for all competitors.
- 3.2 Each competitor shall be a national of the country of the national authority entering him or her.
- 3.3 All competitors must be a member of their national Europe Class association.
- 3.4 The number of entries for the Open Week is not limited.
- 3.5 The number of entries per nation for the World Championship is subject to the quota system of the IECU (IECU Rules for World Championship §2).
- 3.6 Entries shall be made by the National Class Association in accordance with the instructions as described in the regatta website [www.anguadiana.no.sapo.pt](http://www.anguadiana.no.sapo.pt)
- 3.7 All entries and entry fees shall be received not later than June 1<sup>st</sup>, 2008.
- 3.8 Entries without competitor’s names are acceptable if the selection of the national team has not been completed before June 1<sup>st</sup>, 2008. In that case the National Class Association shall enter the number of boats intending to participate together with the entry fee(s) before June 1<sup>st</sup>, 2008 and confirm the names of the participants before June 29<sup>th</sup>, 2008.
- 3.9 Coach registration assures free entrance in ceremonies and free crane utilization – 60.00€

### 4 ENTRY FEES

| Event | Entry fee | Late entry fee |
|-------|-----------|----------------|
|-------|-----------|----------------|

|                           |             |             |
|---------------------------|-------------|-------------|
| <b>Open Week</b>          | <b>€120</b> | <b>€150</b> |
| <b>World Championship</b> | <b>€230</b> | <b>€300</b> |

Fees shall be paid to “Associação Naval do Guadiana” in Vila Real de Santo António/Portugal and shall be received before June 1<sup>st</sup>, 2008 or for late entry/payment before June 20<sup>th</sup>, 2008.

Bank account information:

Bank Caixa Geral de Depósitos

BIC/SWIFT CGDIPTPL

Account name Associação Naval do Guadiana

Account number 2116007544730

NIB 003521160000754473089

IBAN PT50003521160000754473089

Bank Adress Praça Marquês de Pombal

8900 Vila Real de Santo António

## 5 FORMAT

5.1 The competition format will be described in the sailing Instructions

## 6 SCHEDULE

### 6.1 Open Week:

- June 30<sup>th</sup> - 9.00 – 18.00 - Registration
- July 1<sup>st</sup> - 9.00 – 11.00 - Registration  
13.00 - First warning signal
- July 2<sup>nd</sup> to 4<sup>th</sup> - 11.00 - First warning signal of the day
- July 4<sup>th</sup> - No warning signal after 15.00 hrs  
- - Prize giving  
- -

### 6.2 World Championship:

- July 4<sup>th</sup> and 5<sup>th</sup> - 9.00 – 18.00 Registration and measurement (A measurement schedule will be posted on the Official Notice Board at the time of registration).
- July 5<sup>th</sup> - 13:00 IECU Nations Cup  
19.00 World Championship Opening ceremony
- July 6<sup>th</sup> to 8<sup>th</sup> - 11.00 Races.
- July 9<sup>th</sup> - Lay day. (If the number of races completed before the lay day is less than the scheduled number of races, racing may take place on the lay day).
- July 10<sup>th</sup> to 12<sup>th</sup> - 11.00 Races
- July 12<sup>th</sup> - No warning signal after 15.00 hrs  
Prize giving and closing ceremony

### 6.3 Two races are scheduled each day.

If the number of races completed falls behind the schedule, 3 races may be sailed a day.

## 7 MEASUREMENTS

7.1 Each boat shall produce a class measurement form and a valid measurement certificate and present it for registration and measurement.

7.2 The measurement schedule will be posted on the Official Notice Board. Equipment and the competitor must be at the disposal of the measurement committee at the scheduled time for their national team.

7.3 Equipment must be limited to the quantities indicated in point 1.5 above.

## **8 SAILING INSTRUCTIONS**

The sailing instructions will be available at registration.

## **9 VENUE**

9.1 The on-shore facilities for the regatta are located in the Regatta Office of the Associação Naval do Guadiana,

9.2 The location of the race areas is shown in Attachment 1.

## **10 THE COURSES**

10.1 The courses to be sailed will be the IECU Championship Course, trapezoid with inner and outer loop.

10.2 The target time for the first boat to finish will be 50 minutes.

## **11 SCORING**

The following applies separately for both the International Open Week and the World Championship.

11.1 For the Open Week, 8 races are scheduled and 1 race is required to constitute a series. For the Worlds, 11 races are scheduled and 4 races are required to constitute a series.

11.2 (a) When fewer than 4 races have been completed, a boat's series score will be the total of her race scores.

(b) When from 4 to 8 races have been completed, a boat's series score will be the total of her race scores excluding her worst score.

(c) When 9 or more races have been completed, a boat's series score will be the total of her race scores excluding her two worst scores.

## **12 SUPPORT BOATS**

12.1 Support boats, team leaders, coaches and other support personnel shall be registered at the Regatta Office within the registration time. (See schedule).

12.2 Support boats shall display a white flag with the national letters as described in RRS Appendix G. Minimum size of the flags is 40cm x 50cm. The flag(s) shall be clearly visible on both sides of the boats.

## **13 BERTHING**

Boats shall be kept in their assigned places while ashore.

## **14 RADIO COMMUNICATION**

A boat shall neither make radio transmissions while racing nor receive radio communications not available to all boats. This restriction also applies to mobile telephones.

## **15 PRIZES**

15.1 Prizes will be available for the International Open Week and for the World Championship.

15.2 Each national team or team leader is requested to bring a CD disc with a recording of its national hymn and a national flag (standard size 100 x 200 cm) at the registration in the **Regatta Office**.

## **16 MEDIA RIGHTS**

The organizing authority holds all media rights to any motion pictures, still photographs, live or taped film or video on television and/or other media showing any competitor during the regatta as

well as content use in any media for either editorial, press or advertising purposes without compensation.

### **17 DISCLAIMER OF LIABILITY**

Competitors participate in the regatta entirely at their own risk (See RRS 4, Decision to Race). The organizing authority and any other parties involved in the regatta organization will not accept any liability for any loss, material damage or personal injury or death sustained in conjunction with or prior to, during or after the regatta.

### **18 INSURANCE**

Each participating boat shall be insured with valid third-party liability insurance with a minimum cover of € 500,000 per event or the equivalent.

### **19 CHARTER BOATS**

Charter boats are *not* mandatory.

Competitors wishing to charter a boat can contact Winner Boats at [winner@winner.es](mailto:winner@winner.es) or phone (+34) 972 315 100.

### **20 ACCOMMODATION**

20.1 Camping.

Contact the organising authority

20.2 Hotels

Contact Laranja Tours

Tel. +351 281 542 607

Fax +351 281 518 069

[www.laranjatours.com](http://www.laranjatours.com)

See attachment 2

### **21 FURTHER INFORMATION**

For further information see the regatta website [www.anguadiana.no.sapo.pt](http://www.anguadiana.no.sapo.pt) or contact by mail:

Associação Naval do Guadiana

Avenida da República

Apartado 40

8901-909 Vila Real de Santo António

Portugal

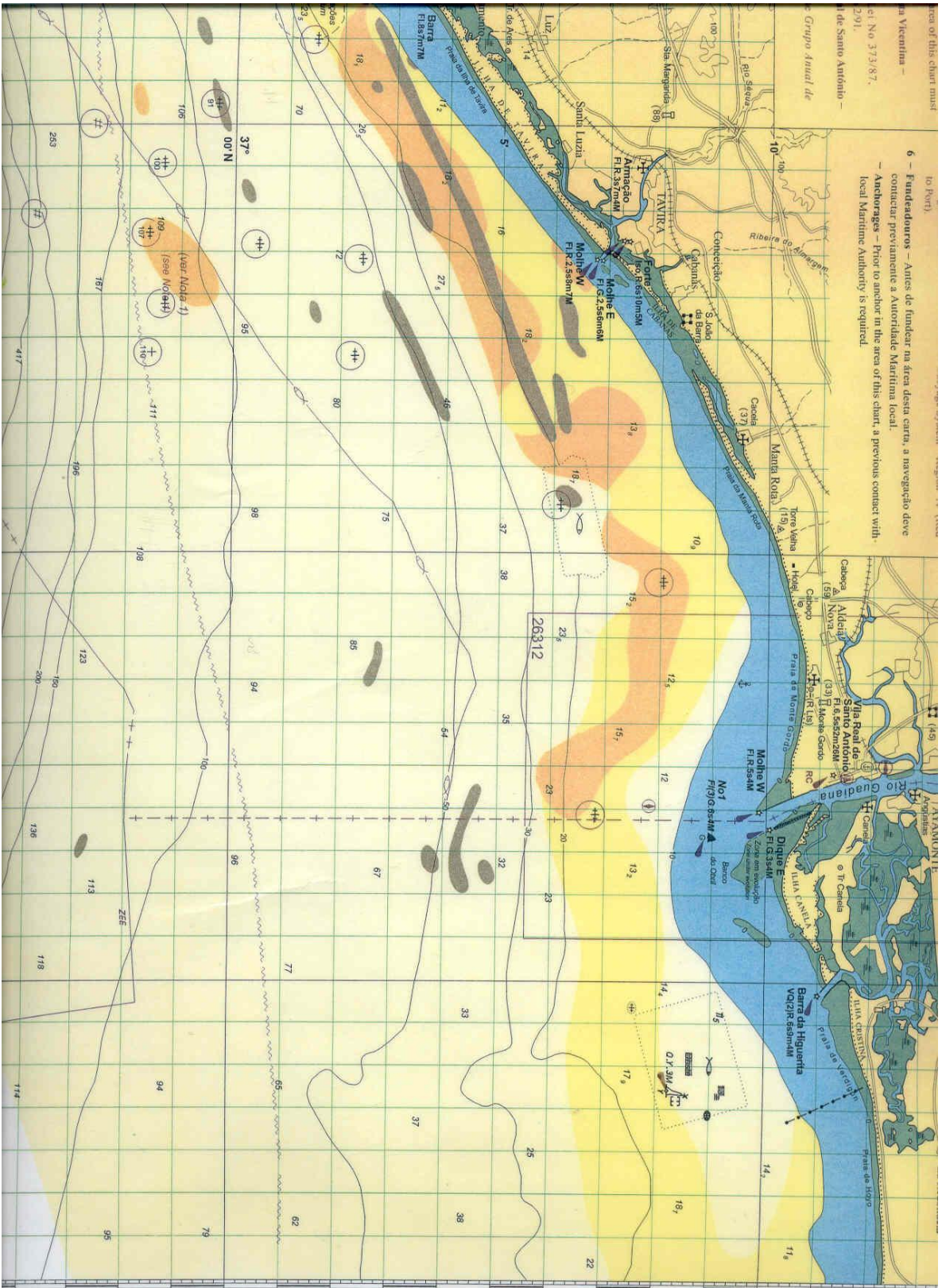
Telf. +351 281 513 769

Fax +351 281 511 140

[anguadiana@mail.telepac.pt](mailto:anguadiana@mail.telepac.pt)

### **ATTACHMENT 1**

|              |
|--------------|
| ATTACHMENT 1 |
|--------------|



(to part)

- 6 - Fundedouro - Antes de fundar na área desta carta, a navegação deve contactar previamente a Autoridade Marítima local.
- Anchorage - Prior to anchor in the area of this chart, a previous contact with local Maritime Authority is required.

area of this chart must  
 in Vicentina -  
 et No 373/87,  
 2/91.  
 Al de Santo António -  
 Grupo Atual de



## ATTACHMENT 2

**HOTELS – MONTE GORDO****PREÇOS POR PESSOA - POR DIA****Prices per person – per day €**

| <b>Baia de Monte Gordo (***)</b> | <b>Duplo</b>                | <b>Single</b>               | <b>3rd Person</b> |
|----------------------------------|-----------------------------|-----------------------------|-------------------|
| <b>01 to 25/07/08</b>            | <b>22,50</b>                | <b>32,50</b>                | <b>15,75</b>      |
| <b>26 to 26/07/08</b>            | <b>43,75</b>                | <b>56,25</b>                | <b>30,62</b>      |
| <b>Alcazar (***)</b>             | <b>Duplo</b>                | <b>Single</b>               | <b>3rd Person</b> |
| <b>01 – 14/07/08</b>             | <b>41,44</b>                | <b>58,02</b>                | <b>31,92</b>      |
| <b>15 to 26/07/08</b>            | <b>49,94</b>                | <b>69,92</b>                | <b>38,45</b>      |
| <b>Vasco Gama (***)</b>          | <b>Duplo-VT</b>             | <b>Single-VT</b>            | <b>3rd Person</b> |
| <b>01 – 25/07/08</b>             | <b>45,63</b>                | <b>68,44</b>                | <b>30% red.</b>   |
| <b>26 to 31/07/08</b>            | <b>58,75</b>                | <b>88,13</b>                | <b>30% red.</b>   |
| <b>Praia Monte Gordo (****)</b>  | <b>Júnior Suite<br/>DBL</b> | <b>Júnior Suite<br/>SGL</b> | <b>3rd Person</b> |
| <b>01 – 10/07/08</b>             | <b>42,50</b>                | <b>65,00</b>                | <b>25% red.</b>   |
| <b>11 to 31/07/08</b>            | <b>70,00</b>                | <b>92,50</b>                | <b>25% red.</b>   |

**APARTMENTS IN MONTE GORDO****PREÇO POR APARTAMENTO - POR DIA****Price for apartment per day (€)**

| <b>Veleiro (Turísticos) -self catering</b>        | <b>T1(2-4pax)</b>            | <b>T2(4-6pax)</b>                 | <b>T3(6-8pax)</b>            |
|---|------------------------------|-----------------------------------|------------------------------|
| <b>July</b>                                       | <b>90,63</b>                 |                                   |                              |
| <b>Aparthotel Alba (***) -self catering</b>       | <b>T0(2pax)</b>              | <b>T1(4pax)</b>                   |                              |
| <b>01 to 25/07/08</b>                             | <b>70,00</b>                 | <b>105,00</b>                     |                              |
| <b>26 to 31/07/08</b>                             | <b>85,00</b>                 | <b>125,00</b>                     |                              |
| <b>Apart. Guadiana (***)-self catering</b>        | <b>T0(2pax)</b>              | <b>T1(4pax)</b>                   | <b>T2 (6pax)</b>             |
| <b>01 to 15/07/08</b>                             | <b>67,00</b>                 | <b>89,00</b>                      | <b>98,00</b>                 |
| <b>16 to 31/07/08</b>                             | <b>83,00</b>                 | <b>133,00</b>                     | <b>162,00</b>                |
| <b>Apart. Calema (***) -self catering</b>         | <b>T0(2pax)</b>              | <b>T1(4pax)</b>                   | <b>T2 (6pax)</b>             |
| <b>01 to 15/07/08</b>                             | <b>77,50</b>                 | <b>96,25</b>                      | <b>116,25</b>                |
| <b>16 to 31/07/08</b>                             | <b>92,50</b>                 | <b>141,25</b>                     | <b>170,00</b>                |
| <b>Apart. Dunamar (****) -self catering</b>       | <b>T1(4pax)</b>              | <b>T2(6pax)</b>                   | <b>T3 (8pax)</b>             |
| <b>July</b>                                       | <b>147,50</b>                | <b>185,00</b>                     | <b>225,00</b>                |
| <b>Apart. PLAZA(Turísticos)<br/>Self catering</b> | <b>T1(4pax)<br/>Landview</b> | <b>T1(4pax)<br/>Side Sea View</b> | <b>T1(4pax)<br/>Sea View</b> |
| <b>01 to 10/07/08</b>                             | <b>37,50</b>                 | <b>50,00</b>                      | <b>56,25</b>                 |
| <b>11 to 31/07/08</b>                             | <b>81,25</b>                 | <b>87,50</b>                      | <b>100,00</b>                |

***International Europe Class  
World Championship and Open Week  
30 June to 12 July 2008***

***Entry Form***

|                    |          |               |
|--------------------|----------|---------------|
| Open Week          | Yes / No | Male / Female |
| World Championship | Yes / No | Male / Female |

Country : \_\_\_\_\_

Name : \_\_\_\_\_

Sail Number : \_\_\_\_\_

Passport Number: \_\_\_\_\_

Birth Date: \_\_\_\_\_

Signature : \_\_\_\_\_

Date : \_\_\_\_\_

